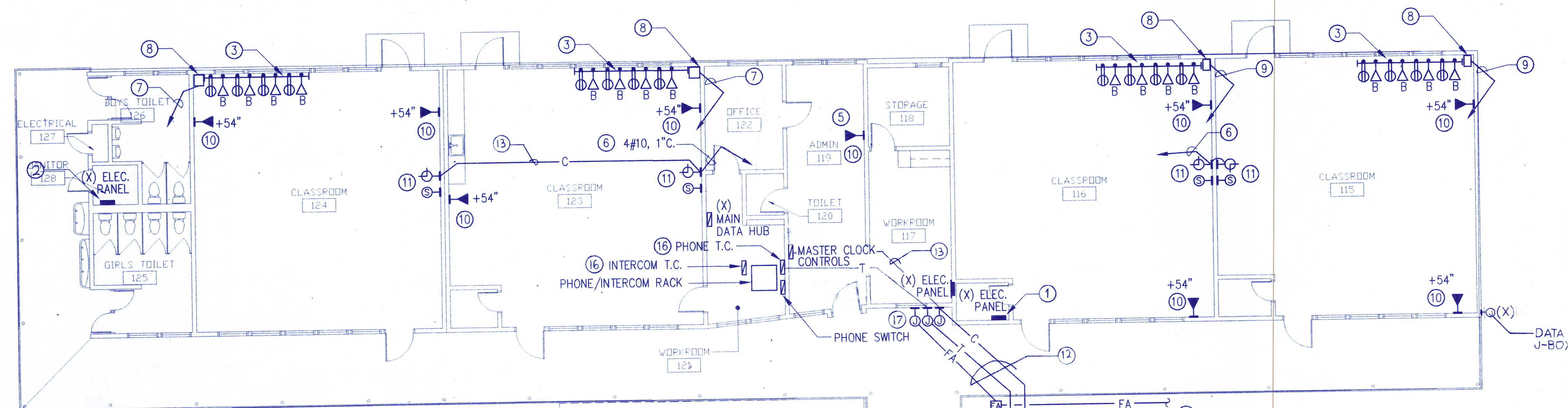


SHEET NOTES

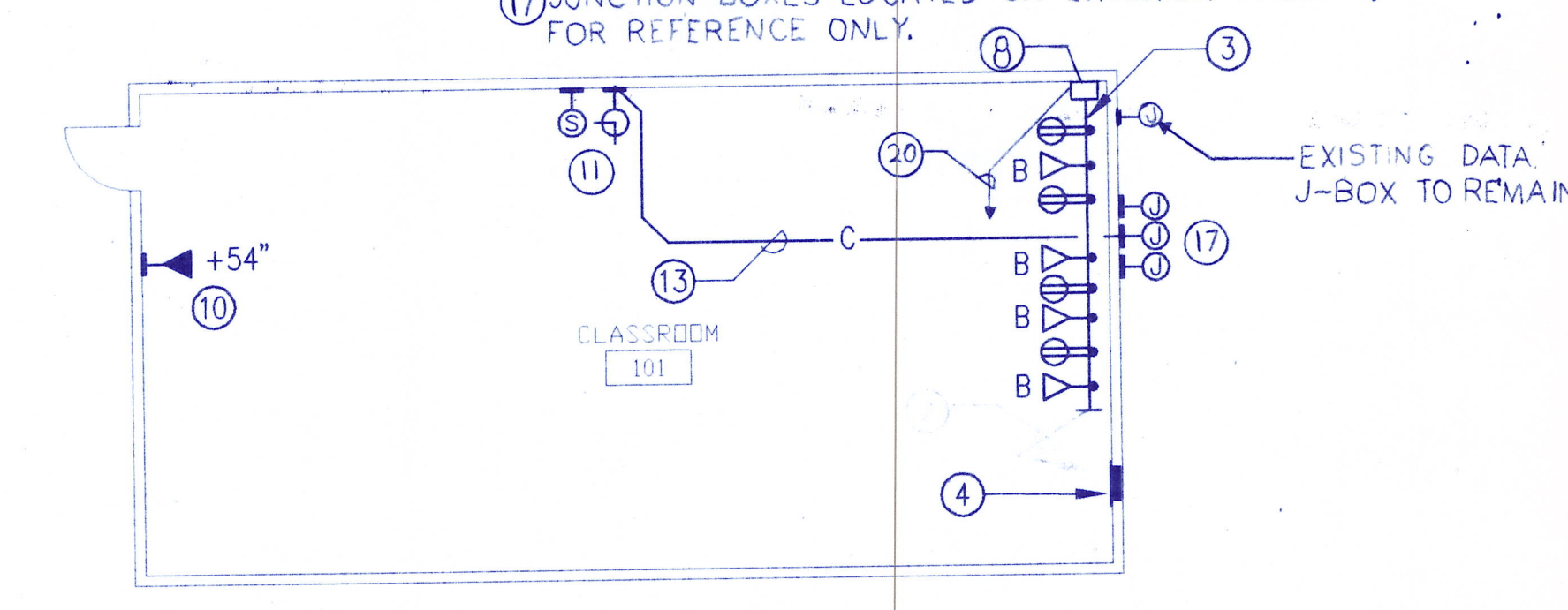
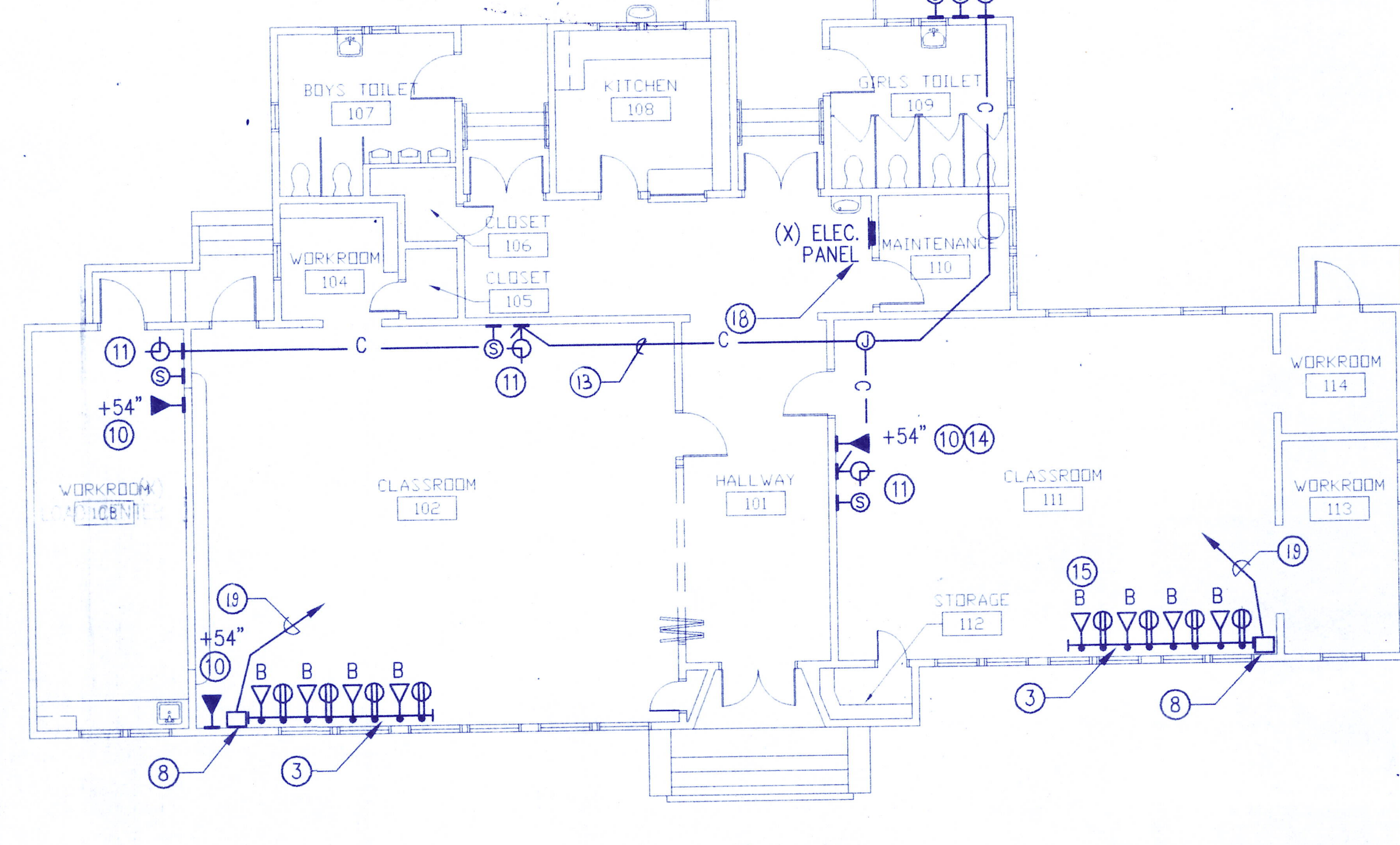
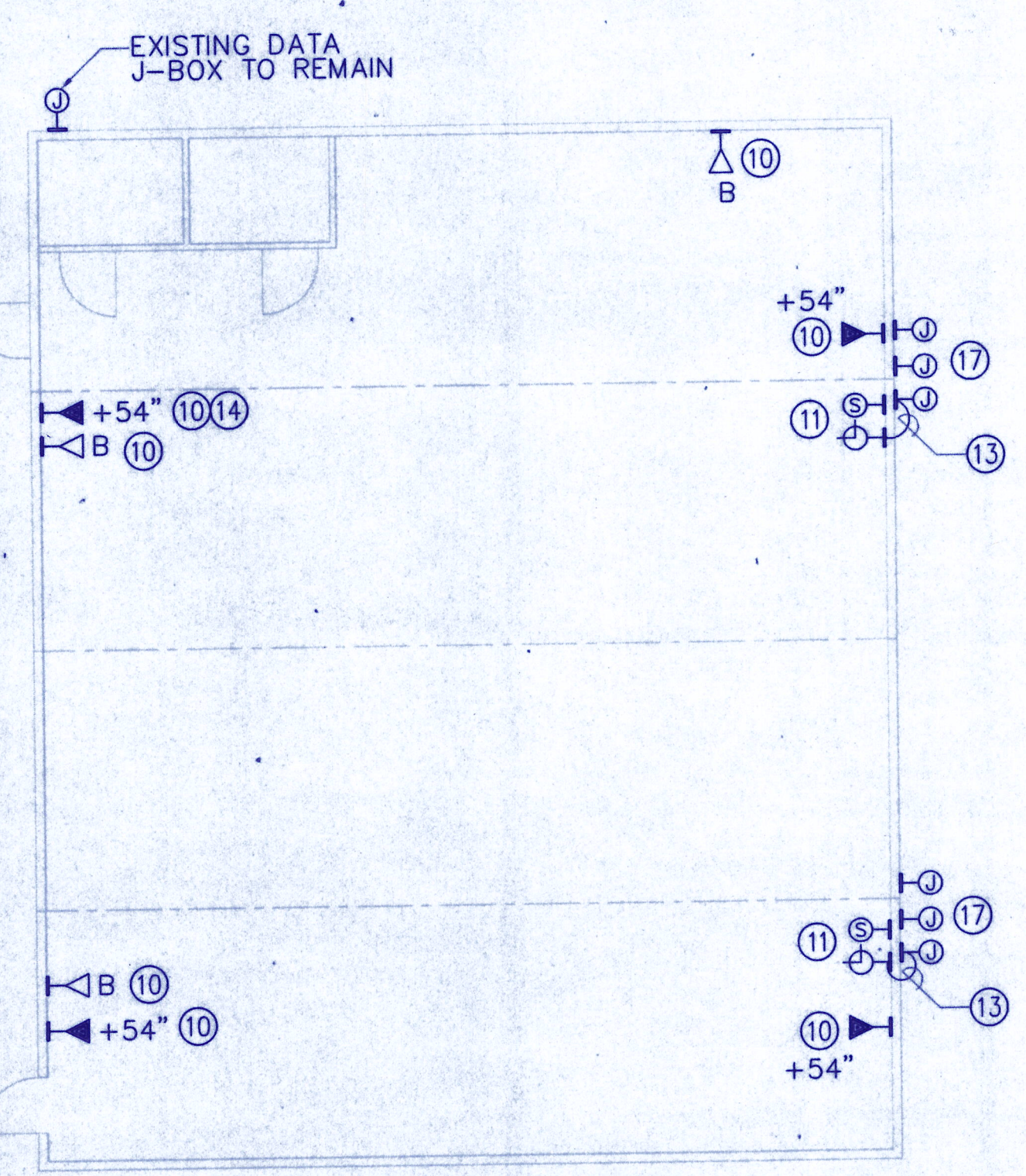
1. THESE PLANS SHOW NEW EQUIPMENT TO BE INSTALLED. EXISTING EQUIPMENT (NOT SHOWN) TO REMAIN. U.N.O.
2. REFER TO SHEET E1.5 FOR SYMBOL LIST.

NOTES

- 1 PROVIDE (2) 20A, 1P CIRCUIT BREAKERS IN EXISTING PANEL LOCATED IN MECHANICAL CLOSET OF ROOM 116. FOR ADDITIONAL RECEPTACLES IN ROOMS 115 & 116.
- 2 PROVIDE (2) 20A, 1P CIRCUIT BREAKERS IN EXISTING PANEL LOCATED IN JANITOR ROOM 128. FOR ADDITIONAL RECEPTACLES IN ROOMS 124 & 123.
- 3 PROVIDE TWO COMPARTMENT, (1-POWER, 1-DATA), TWO COVER ALUMINUM SURFACE RACEWAY (LENGTH AS SHOWN) ALONG WITH DEVICES SHOWN. SEE DETAIL 1/EI-5.1.
- 4 PROVIDE (1) NEW 20A, 1P CIRCUIT BREAKER IN EXISTING LOAD CENTER.
- 5 LOCATE MAIN ATTENDANT CONSOLE IN ADMIN 119.
- 6 HOMERUN 4#10, 1"C. TO MASTER CLOCK CONTROL PANEL.
- 7 2#12, 1/2"C. TO EXISTING PANEL IN JANITORS ROOM 128. CONNECT TO CIRCUIT BREAKER PROVIDED IN NOTE 2.
- 8 PROVIDE TWO COMPARTMENT ALUMINUM SURFACE RACEWAY MATCHING POWER/DATA RACEWAY. SEE DETAIL 1/EI-5.1.
- 9 2#12, 1/2"C. TO EXISTING PANEL IN MECHANICAL CLOSET OF ROOM 116. CONNECT TO CIRCUIT BREAKERS PROVIDED IN NOTE 1.
- 10 PROVIDE WIREMOLD V500 SERIES RACEWAY FROM DATA OR TELEPHONE OUTLET BOX AND STUB ABOVE LAY-IN CEILING.
- 11 PROVIDE ALUMINUM SURFACE RACEWAY FROM DEVICE BOX TO J-BOX ABOVE LAY-IN CEILING. SEE DETAIL 2/EI-5.1.
- 12 REFER TO SITE FOR SITE WORK.
- 13 4#14, 1/2" CLOCK CONDUIT. TYP. U.N.O.
- 14 PROVIDE WIREMOLD V5700 SERIES OUTLET BOX OR APPROVED EQUAL COMPATIBLE WITH SURFACE RACEWAY. TYP.
- 15 "B" INDICATES BLANK COVER PLATE FOR FUTURE DATA JACK. TYP.
- 16 PROVIDE TERMINAL CABINET (T.C.) AS SHOWN. TYP.
- 17 JUNCTION BOXES LOCATED ON EXTERIOR WALLS SHOWN FOR REFERENCE ONLY.



- 16 PROVIDE (2) 20A, 1P CIRCUIT BREAKERS IN EXISTING PANEL IN HALLWAY 101 FOR ADDITIONAL RECEPTACLES IN ROOMS 102 AND 111.
- 19 2#12, 1/2"C. TO EXISTING PANEL IN HALLWAY 101. CONNECT TO CIRCUIT BREAKER PROVIDED IN NOTE 18.
- 20 2#12, 1/2"C. TO EXISTING LOAD CENTER AND CIRCUIT BREAKER PROVIDED IN NOTE 4.

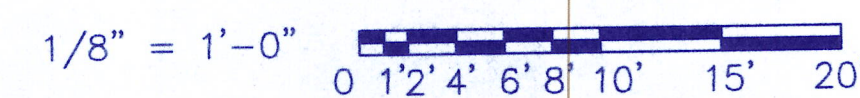


EXISTING BLDG. C
TEL., DATA, CLOCK SYSTEMS
SCALE: 1/8" = 1'-0"

EXISTING BLDG. A + B
POWER, DATA, SIGNAL PLAN
SCALE: 1/8" = 1'-0"

EXISTING BLDG. D (TYP. OF BLDG. E)
POWER, DATA, SIGNAL PLAN
SCALE: 1/8" = 1'-0"

GRAPHIC SCALES



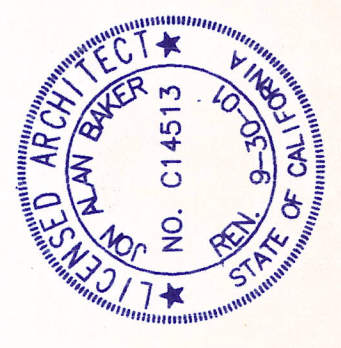
LAMB CONSULTING ENGINEERS

2445 5th Avenue
Suite 310
San Diego CA, 92101
Phone: 619. 235.6620
Fax: 619. 235.9401
lambengr@adnc.com

STATE APPROVALS



IDENTIFICATION STAMP
DIV. OF THE STATE ARCHITECT
OFFICE OF REGULATION SERVICES
APPL 4-101969
AC _____ FLS _____ SS _____
DATE 3-2-00



N.T.D.
ARCHITECTS
4719 Weiridge Ave., Suite 200 San Diego, CA 92123
Gendera • San Diego • Auburn

DESCANSO ELEMENTARY SCHOOL
SITE - BUILDINGS RENOVATION / COMMUNICATIONS PACKAGE
MOUNTAIN EMPIRE SCHOOL DISTRICT
24642 NEJAS BOULEVARD
DESCANSO, CALIFORNIA 91816

DATE: 03-02-00
JOB NUMBER: 1998-0135
DRAWN BY:
CHECKED BY:

SHEET OF

E1-3.1